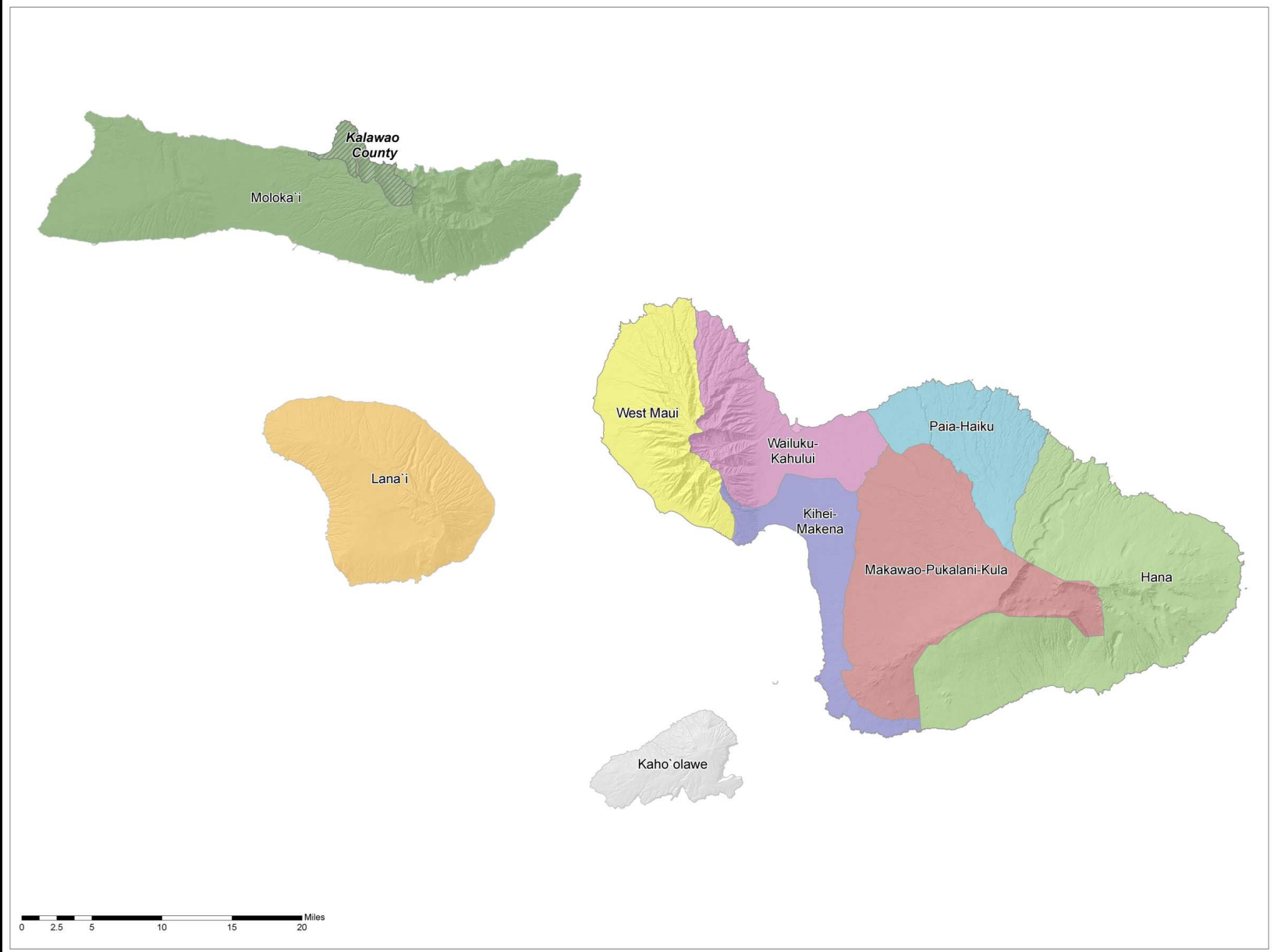
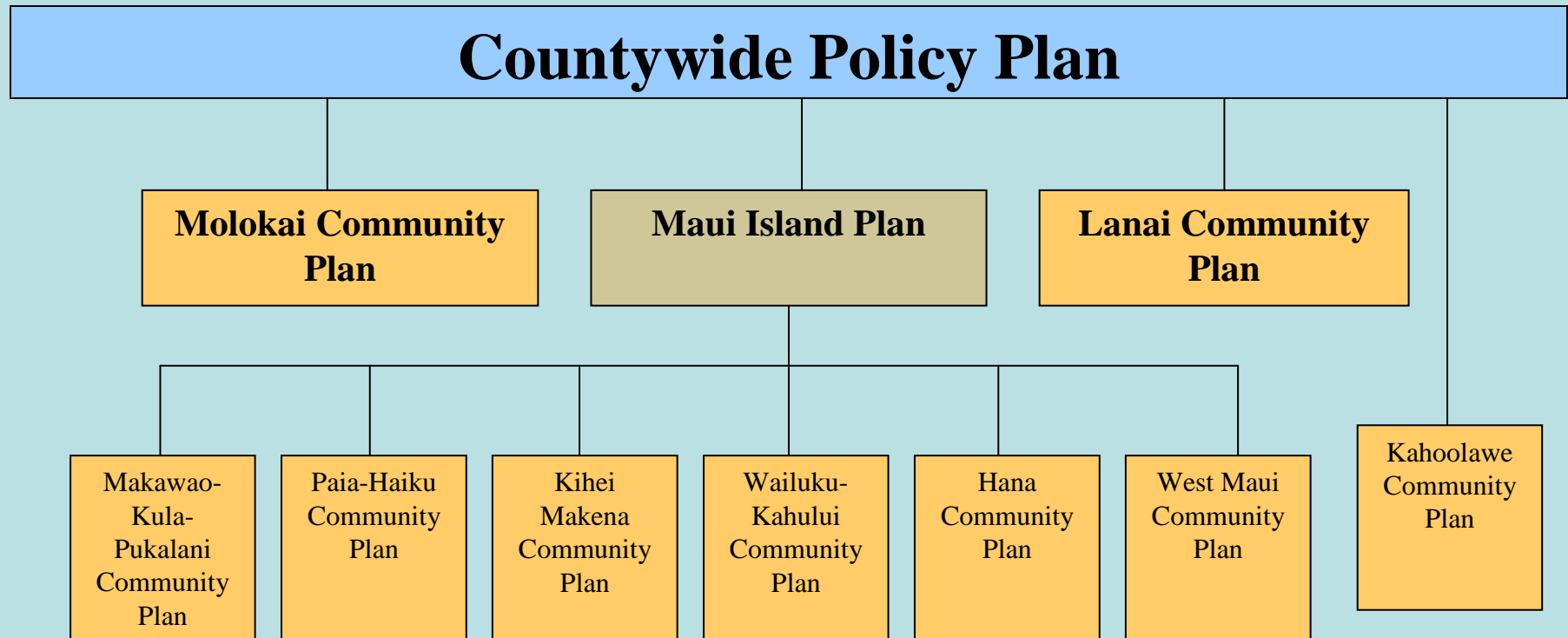


Maui County General Plan 2030

Erin Wade, AICP, Staff Planner
Long Range Planning
Maui County Planning Department



General Plan Organization



General Plan Advisory Committees (GPAC's)

- Lanai – 13 members
- Maui – 25 members
- Molokai – 13 members

- Mayoral and Council appointed

(MCC 2.80B.)

What is the GPAC's role?

“...comment, advise and provide recommendations to the planning director regarding the proposed revisions prepared and recommended by the planning director.”

(MCC 2.80B.)

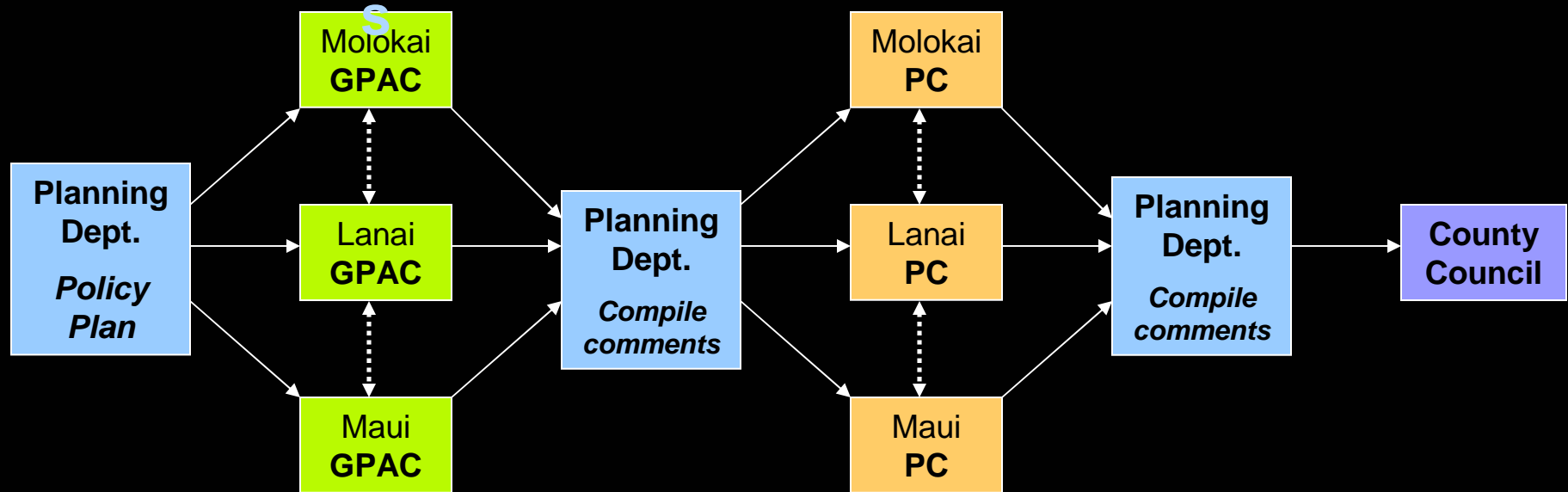
The Countywide Policy Plan



Policy Plan Review Process

General Plan Advisory Committee

Planning Commissions



Timeline



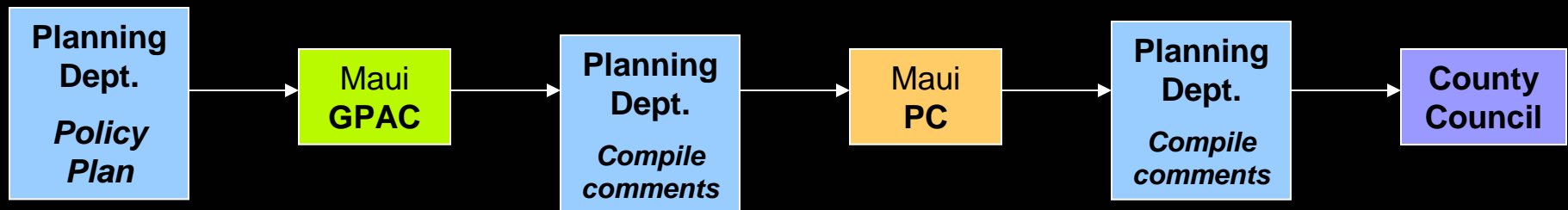
Maui Island Plan



Island Plan Review Process

General Plan Advisory Committees

Planning Commissions



Timeline



Community Input for General Plan Update 2030

- Focus Maui Nui – countywide public SWOT analysis
- WalkStory – Maui centric, issues focused
- PlanStory – Maui centric, mapping exercise
- Public Testimony

Challenges to Community Input

- MCC 2.80B
 - Timeframe
 - “department draft”
 - Size of GPAC
- Sunshine Law
 - Investigative committees

Civic Engagement...Why Bother?



Thank you

